



THE aarhus SYSTEM™

Professor Birte Melsen, the name behind The Aarhus System™, is one of the most recognized in orthodontics today. The individual behind the name is the author of more than 300 published scientific articles covering a broad range of topics. Professor Birte Melsen has held the title of Professor and Chairman of the Department of Orthodontics at the Royal College, Aarhus, Denmark since 1975, a tenure of over 35 years. She holds countless honors for her contributions to orthodontics and is recognized by her peers as a premier researcher and academic.

Professor Melsen's interest and work in skeletal anchorage began in the 70's with Jens Kølsten Pedersen. After more than 20 years of investigation, the Aarhus Mini-implant System was introduced in 1996. The Aarhus System is the result of Professor Birte Melsen's continuing research, development, and dedication to this field.



The Aarhus System Mini Implants

Pairing premium materials with optimal sizing, Aarhus Mini Implants yield a perfect balance of strength and working diameter for maximum clinical application. The material, Ti6Al4V, is a high strength titanium alloy noted for its biocompatibility and corrosion resistance.

The 1.5 mm thread diameter permits placement in narrow inter-radicular spaces without sacrificing strength.

All standard diameter screws in the system are available in either 6 mm or 8 mm thread lengths. In addition, one can select from two soft tissue collar lengths, either 1.5 mm or 2.5 mm, for varying tissue depths.

No matter what your preference of biomechanics, Aarhus has a screw head design to meet your skeletal anchorage needs:



Through-Hole Head Screws accept wires, hooks, lever arms, etc., up to .030 in diameter, providing control in two planes of space.



Button Head Screws are ideal for elastic chain or NiTi spring applications when control in any one plane of space is needed.



Bracket Head Screws are slotted to be used as an unconventional bracket and accept sectional wires and levers up to .022 in x .028 in for full 3D control.

THROUGH-HOLE Screw accepts wires, hooks, lever arms, etc., up to .030 in diameter - control in two planes of space.



	Overall Length A	Tissue Collar Length B	Thread Length C	Thread Diameter D
68.99.20A	9.8 mm	1.5 mm	6.0 mm	1.5 mm
68.99.21A	10.8 mm	2.5 mm	6.0 mm	1.5 mm
68.99.22A	11.8 mm	1.5 mm	8.0 mm	1.5 mm
68.99.23A	12.8 mm	2.5 mm	8.0 mm	1.5 mm

BUTTON HEAD Screw is ideal for elastic chain or NiTi spring applications - control in one plane of space.



	Overall Length A	Tissue Collar Length B	Thread Length C	Thread Diameter D
68.99.24A	9.6 mm	1.5 mm	6.0 mm	1.5 mm
68.99.25A	10.6 mm	2.5 mm	6.0 mm	1.5 mm
68.99.26A	11.6 mm	1.5 mm	8.0 mm	1.5 mm
68.99.27A	12.6 mm	2.5 mm	8.0 mm	1.5 mm

BRACKET HEAD Screw is slotted to be used as an unconventional bracket and accept sectional wires and levers up to .022 x .028 in for true 3D control.



	Overall Length A	Tissue Collar Length B	Thread Length C	Thread Diameter D
68.99.28A	9.2 mm	1.5 mm	6.0 mm	1.5 mm
68.99.29A	10.2 mm	2.5 mm	6.0 mm	1.5 mm
68.99.30A	11.2 mm	1.5 mm	8.0 mm	1.5 mm
68.99.31A	12.2 mm	2.5 mm	8.0 mm	1.5 mm

BRACKET HEAD Screw



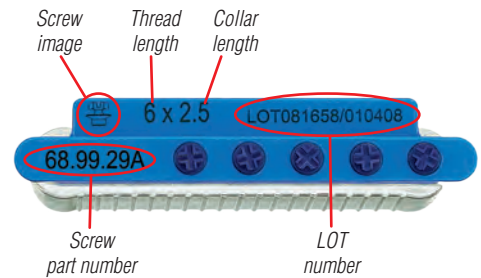
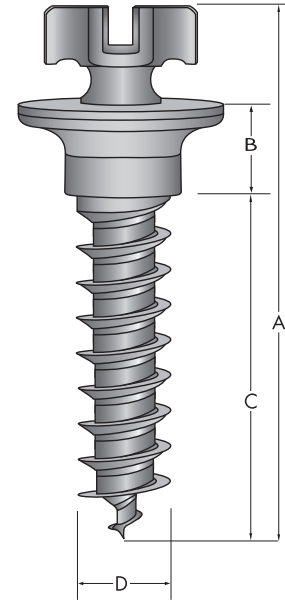
	Overall Length A	Tissue Collar Length B	Thread Length C	Thread Diameter D
68.99.32A	9.6 mm	1.5 mm	6.4 mm	2.0 mm
68.99.33A	11.6 mm	1.5 mm	8.4 mm	2.0 mm

BRACKET HEAD Screw



	Overall Length A	Tissue Collar Length B	Thread Length C	Thread Diameter D
68.99.34A	12.3 mm	1.0 mm	9.6 mm	1.3 mm

NOTE: Miniscrews are packaged in magazines of 5



The Aarhus Magazine

Aarhus screw magazines contain five screws of a single type

The Aarhus Sterilization Tray

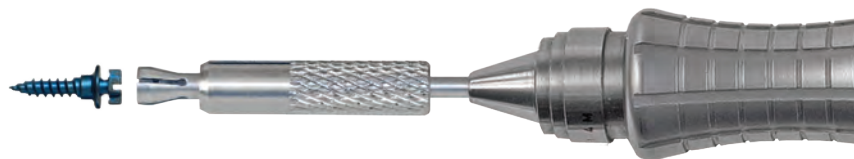
The Sterilization Tray features a compact, light-weight, and roomy design for efficient organization and simplified chairside delivery. The sliding cover plate locks to hold instruments securely in place and is fully vented for superior steam circulation and drainage.

Built-in screw cassette slots and multiple wells have been thoughtfully laid out for all instrumentation needs. Metal construction will provide years of trouble-free service.



The Aarhus System Driver

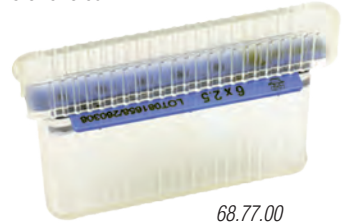
Unique to the Aarhus System, the driver tip incorporates a threaded locking-sleeve at the end of the driver tip. Screws are securely captured and removed from their cassette. Once secured, screws can then be carried to the placement site and driven without worry of "screw wobble" which is a common cause of failure to achieve primary stability.



For Aarhus System information, visit www.americanortho.com/miniscrews_aarhus.htm



- 68.77.97A Starter Kit**
- 1 Sterilization Tray
 - 1 Screwdriver Handle 75.23.50
 - 1 Screwdriver Blade
 - 1 Screw Release Sleeve
 - 10 Screws - 2 five unit packs of choice



68.77.00



68.77.78

75.23.50



75.23.78A



75.23.91



907.50.08



75.23.39



907.50.07



68.92.91



68.92.90



Aarhus Components

- 68.77.00** Aarhus Magazine Holder
- 68.77.78** Sterilization Tray
- 75.23.50** Screwdriver Handle
- 75.23.78A** Screwdriver Handle (optional style)
- 75.23.91** Extended Screwdriver Blade
- 907.50.08** Extended Screw Release Sleeve
- 75.23.39** Screwdriver Blade
- 907.50.07** Screw Release Sleeve
- 68.92.91** Twist Drill 0.9 x 4 x 22 mm-buccal placement
- 68.92.90** Twist Drill 0.9 x 4 x 28 mm-palatal placement

Aarhus Auxiliaries

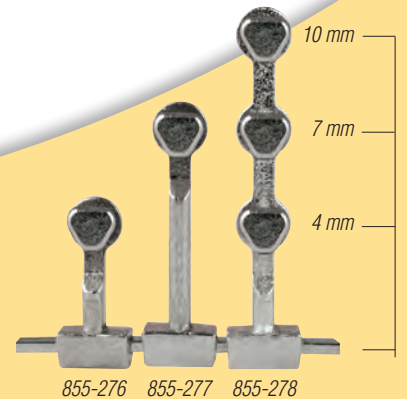
- 001-502** Force Gauge 0-250 g in 10 g increments 1
- 851-183** Cross Tubes (.022 x .028) 10
- 851-184** Piggyback Tubes (.022 x .028) 10
- 855-276** Crimpable Power Hooks (short) 10
- 855-277** Crimpable Power Hooks (long) 10
- 855-278** Crimpable Power Hooks (triple) 10
- 855-184** NiTi Springs (bottle cap end), 50 gms 10
- 855-185** NiTi Springs (bottle cap end), 125 gms 10
- 855-186** NiTi Springs (pear ends), 50 gms 10
- 855-187** NiTi Springs (pear ends), 125 gms 10
- 855-860** Orientation Pin 10
- 851-616** Crimpable Stop with wire 10



001-502



851-183



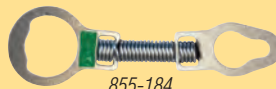
855-276

855-277

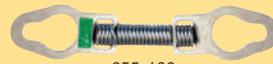
855-278



855-184



855-186



855-185



855-860



851-616